

Specialty Products, Inc. (SPI) is a pioneer and leading innovator in the polyurea protective coatings industry. SPI's corporate philosophy and passion focuses on continuing to raise the industry bar with cutting edge solutions.

SPI's advanced polyurea products are the next evolution of protective coatings for the Wastewater Industry. These ultra high-strength, elastomeric, polyurea coatings simply outperform epoxy, polyurethane, and other hybrid products.

**SPI POLYUREA ADVANTAGES**

- Stronger, more durable, longer service life for increased ROI
- Excellent resistance to many chemicals and hydrocarbons
- Higher elongation, greater flexibility and won't crack or peel like epoxy. Able to withstand substrate expansion and contraction caused by harsh annual weather cycles
- High build - apply to any thickness in one application
- Fast-set - rapid cure, return to service within hours, not days
- Hydrophobic - relatively unaffected by cool surfaces during the application process
- Apply in wider-range of temperatures (below 0° to >100° F)
- Contains 100% solids, no VOCs, solvents or ozone depleting ingredients



Concrete sewage digester restoration

Specialty Products, Inc. is widely recognized as a global market leader and innovator in manufacturing polyurea elastomeric coatings, polyurethane foam systems, and plural-component application equipment. SPI's products are manufactured under a stringent quality assurance program. SPI offers year-round 24/7 technical support, backed by a dedicated staff with over 150 years of collective industry experience. For over 37 years, our customers have relied on SPI's industry leading products and unmatched technical support. We invite you to experience the SPI service difference!



[www.specialty-products.com](http://www.specialty-products.com)

**PROTECTIVE COATING SOLUTIONS  
Wastewater Industry**



**APPLIED CONVEYOR  
& POLYMERS LTD.**

**AUCKLAND BRANCH**

ph: +64 9 237 0009    51 Adams Rd, Pukekohe    P.O. Box 554, Drury 2247,  
fax: +64 9 238 6625    Auckland, 2120    Auckland, New Zealand  
sales@apcon.co.nz    New Zealand

**ROTORUA BRANCH**

Robert McGinley    ph: +64 7 343 6292    35 Depot Street,  
+64 27 271 2871    fax: +64 7 343 6293    Rotorua, New Zealand  
rob@apcon.co.nz

**OAMARU BRANCH**

Alex Valentine    ph: +64 3 437 0145    5/7 Industrial Place,  
+64 21 374 404    fax: +64 3 437 0146    Oamaru, South Island,  
red@apcon.co.nz    New Zealand



Expanding global development has led to a steady increase on the demand and capacity of wastewater infrastructure. However, a significant share of the globally produced effluents is still discharged into rivers and streams without prior treatment. This adds to the importance of large wastewater treatment plants for protecting public health, surface and ground water, to ensure a sustainable water supply. Properly treating and containing sewage presents a continual challenge. Wastewater sewage produces hydrogen sulfide gas that breaks down and deteriorates concrete surfaces. This can lead to potential spills and increased maintenance costs.

Specialty Products' high-performance polyurea coatings provide superior protection for the Wastewater Industry. These durable elastomeric coatings form an impermeable barrier that is resistant to hydrogen sulfide gas, water, and many chemicals. SPI's polyurea coatings help to protect the environment and dramatically extend the service life of wastewater infrastructure.

## WASTEWATER INDUSTRY APPLICATIONS

Protection of sewage digesters and clarifying tanks

Tunnel and sewer manhole preservation and restoration

Protection of above- and below-ground pipes

Secondary containment liners for spill protection

Non-skid and corrosion-resistant flooring, walls, and roofs

## FEATURED INDUSTRY SOLUTIONS

### HT-100F UB™

HT-100F UB™ is a high tensile, high elongation, high build, fast-set, elastomer, specifically formulated to provide a tenacious bond to certain thermoset plastic surfaces. Unlike most spray-applied polyureas, HT-100F UB™ has the unique advantage of adhering to many polymeric substrates, both new and aged,

preparation. It provides a cost effective, flexible, tough, resilient monolithic membrane with water and chemical resistance.

### Polyshield HT™

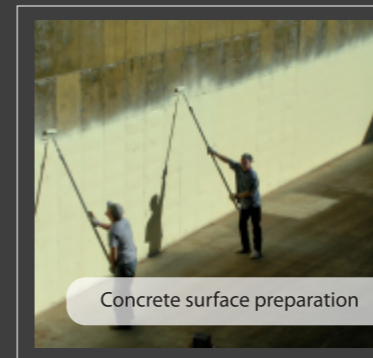
Polyshield HT™ is the work-horse of the polyurea protective coating industry. Millions of square feet of this product have been successfully applied worldwide. This advanced coating combines high elongation and tensile strength properties to form a tough, flexible, resilient monolithic membrane with water and chemical resistance.

### PTU™

PTU™ is a new generation of high-performance polyurea coating and is the result of six years of development and field testing. This chemical-resistant coating provides high-ductility, allowing it to move with expanding and contracting surfaces. PTU™ can be sprayed to any thickness in one application and returned to service in a matter of hours.



New municipal sewage plant



Concrete surface preparation

## The toughest and most durable protective coatings in the industry

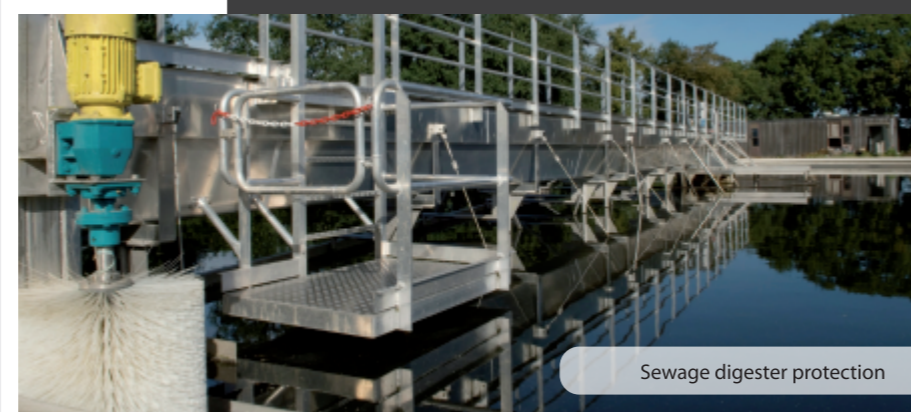
Specialty Products has over 40 unique polyurea elastomer coatings with a wide range of physical properties to meet your specific project requirements. SPI only produces 100% solids, pure polyurea coatings that contain no VOCs, solvents, or harmful ozone depleting ingredients. Our knowledgeable team of industry experts will work closely with you from your project's beginning to the end, providing reliable coating solutions, SSPC/NACE standards, project specifications, and unsurpassed 365-day, 24/7 technical support.

## FEATURED INDUSTRY SOLUTIONS

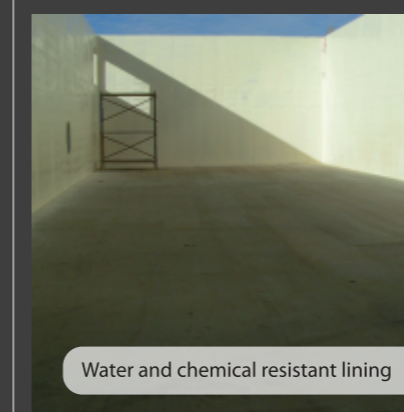
Dry Properties & Test Methods	HT-100F UB™	Polyshield HT™	PTU™
<b>Tensile Strength, psi ASTM D412</b>	> 3900 psi	4219 psi	> 3000 psi
<b>Elongation ASTM D 412</b>	> 300%	619%	100%
<b>Tear Resistance, pli ASTM D 624</b>	n/a	612 pli ± 50	n/a
<b>Shore D Hardness ASTM D 2240</b>	55 D	52-44 D	65 D
<b>Abrasion Resistance ASTM D 4060</b>	n/a	H 18 Wheel 109 mg. lost	n/a
<b>Application Temperature</b>	< 0° to > 100°F	< 0° to > 100°F	< 0° to > 100°F
<b>Service Temperature</b>	-50° to +200°F	-60° to + 250°F	*
<b>Return to Service</b>	24 Hours	24 Hours	12 -24 Hours



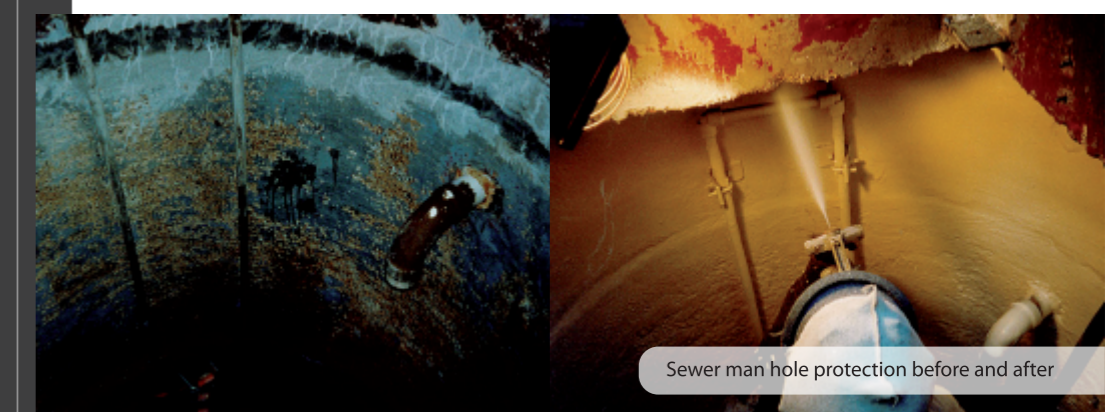
Concrete wet-well lining



Sewage digester protection



Water and chemical resistant lining



Sewer man hole protection before and after

\* Contact SPI for technical information.